

**READ THIS FIRST**  
**Important information and usage precautions**

**No compensation for contents of the recording**

Contents of the recording cannot be compensated for if playback is not possible due to a malfunction of your Pocket Photo Album or recording media, etc.

**Do not get the Pocket Photo Album wet**

Do not use the Pocket Photo Album in the rain or under similar conditions. Water entering the inside the Pocket Photo Album will cause permanent damage.

**Do not expose the Pocket Photo Album to sand or dust**

Using the Pocket Photo Album in sandy or dusty locations may cause your camera to malfunction

**Back up your pictures**

To avoid the potential risk of data loss, always copy (back up) your pictures.

**Do not shake or strike the Pocket Photo Album**

In addition to malfunctions and inability to playback images, this may render your removable memory (MMC/SD card) unusable or cause image data breakdown, damage or loss may occur.

## **READ THIS FIRST**

### **WARNING**

TO REDUCE THE RISK OF FIRE OR SHOCK HAZARD AND INTERFERENCE, USE ONLY THE RECOMMENDED ACCESSORIES AND DO NOT EXPOSE THIS EQUIPMENT TO RAIN OR MOISTURE. DO NOT DISASSEMBLE THE PRODUCT. THERE ARE NO USER SERVICEABLE PARTS INSIDE.

### **CAUTION**

DANGER OF EXPLOSION OR SERIOUS BURNS IF BATTERY IS INCORRECTLY REPLACED. REPLACE ONLY WITH THE SAME OR EQUIVALENT TYPE RECOMMENDED BY THE MANUFACTURER. DISPOSE OF USED BATTERIES ACCORDING TO THE MANUFACTURER'S INSTRUCTIONS.

### **FCC Notice: (U.S. only)**

This device complies with Part 15 of the FCC Rules. Operation is subject to the following two conditions: (1) This device may not cause harmful interference, and (2) this device must accept any interference received, including interference that may cause undesired operation.

This equipment has been tested and found to comply with the limits for a Class B digital device, pursuant to Part 15 of the FCC Rules. These limits are designed to provide reasonable protection against harmful interference in a residential installation. This equipment generates, uses, and can radiate radio frequency energy and, if not installed and used in accordance with the instructions, may cause harmful interference to radio communications.

However, there is no guarantee that interference will not occur in a particular installation. If this equipment does cause harmful interference to radio or television reception, which can be determined by turning the equipment off and on, the user is encouraged to try to correct the interference by one or more of the following measures:

- Reorient or relocate the receiving antenna.
- Increase the separation between the equipment and receiver.
- Connect the equipment into an outlet on a circuit different from that to which the receiver is connected.
- Consult the dealer or an experienced radio/TV technician for help.

FCC Caution: To assure continued compliance, follow the attached installation instructions and use only shielded interface cables with ferrite core when connecting to computer or peripheral devices.

Any changes or modifications not expressly approved by the party responsible for compliance could void the user's authority to operate this equipment.

Any questions or comments, please contact MAGPIX Customer Support.

Telephone: 1-888-362-4749

Website: [www.magpix.com](http://www.magpix.com)

## INTRODUCTION

Thank you for purchasing this MAGPIX Pocket Photo Album. Please read this user's manual carefully and keep it in a safe place for future reference.

Ultra stylish and compact, The MAGPIX Pocket Photo Album is ready to go with you everywhere. It weighs only 2.2 ounces and fits nicely inside the palm of your hand. Share pictures with friends and family using the Pocket Photo Album's super bright TFT LCD screen or connect the Pocket Photo Album to a television and share pictures with everyone at once. With the ability to zoom in and pan around your image, never miss a detail. Built-in internal memory and an available SD memory card slot, allow you to add as much memory as you need.

Here's how it works: just install the Pocket Photo Album's easy to use PhotoManager software and connect the Pocket Photo Album to your PC's USB port and you're ready to go. In addition to your pictures, the Pocket Photo Album's Photo Manager allows you to capture any information displayed on your computer's screen to be viewed later on the Pocket Photo Album, such as driving directions, presentations, and web pages.

Whether carried in a shirt pocket or a designer purse, with the Pocket Photo Album, you'll have your entire photo collection at the tips of your fingers.

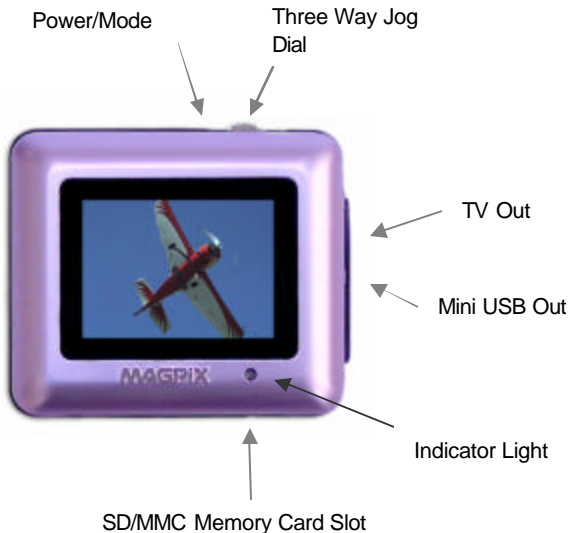
To get the most out of your Pocket Photo Album, please read this manual carefully.

**This manual is divided into seven parts:**

- I. Getting to Know Your MAGPIX Pocket Photo Album
- II. Using Your MAGPIX Pocket Photo Album
- III. Downloading Your Pictures to Your Pocket Photo Album
- IV. Advanced Features and Tips
- V. PhotoManager Software Glossary
- VI. Technical Specifications
- VII. Troubleshooting and Frequently Asked Questions

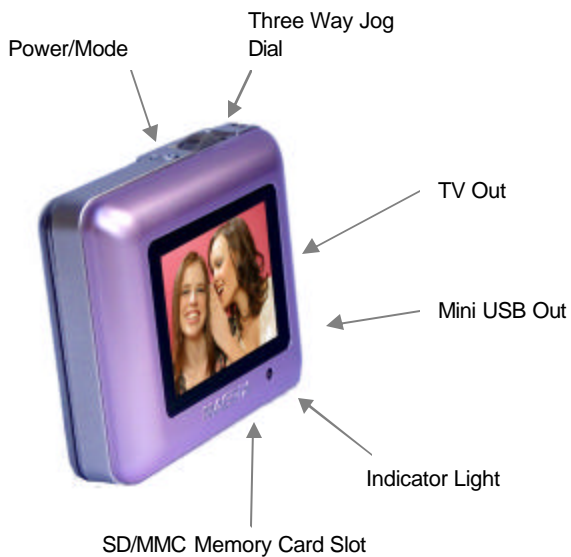
## GETTING TO KNOW YOUR POCKET PHOTO ALBUM

The following are four views of the MAGPIX Pocket Photo Album to help familiarize you with your new device. The part names will be referred to throughout this manual.



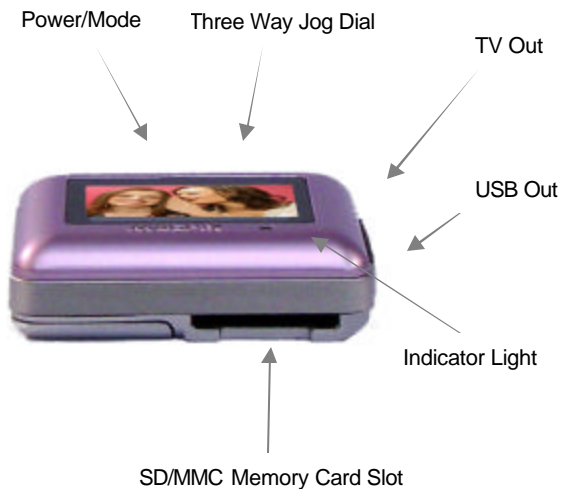
**Front View**

## GETTING TO KNOW YOUR POCKET PHOTO ALBUM



**Diagonal View**

## GETTING TO KNOW YOUR POCKET PHOTO ALBUM



**Side View**

## GETTING TO KNOW YOUR POCKET PHOTO ALBUM



Battery Cover

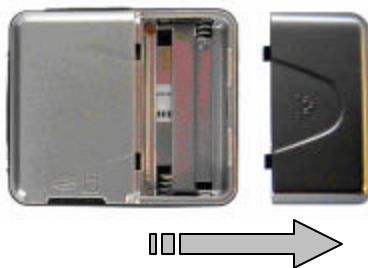
SD/MMC Memory Card Slot

**Back View**

## USING YOUR POCKET PHOTO ALBUM

### 1. Insert 2 AAA Alkaline Batteries (Not Included)

Turn the Pocket Photo Album over. Slide the battery cover off. Insert the batteries aligning them with the + and – symbols. Slide the battery cover closed.



### 2. Turn on the Pocket Photo Album

To turn on the Pocket Photo Album, press and release the Power/Mode button.

To turn off the Pocket Photo Album, press and hold the Power/Mode button. You will hear a beep immediately. Continue to hold down the Power/Mode button until you hear the device beep for a second time. (About 2 seconds).

### 3. Advance to the Next Picture

The screen will display a sample photo. To advance to the next picture, move the jog dial to the right. To go back to the original picture move the jog dial back to the left. Repeat this to advance through your pictures one by one.

To fast forward through your pictures, move and hold the Jog Dial to the left or right, and you will see the picture counter increase rapidly. Release the Jog Dial to stop fast forward.

Note: Only the counter will be displayed during fast forward. No pictures will be shown.

**Move the Jog Dial to the right  
or to the left to advance to your  
next picture.**



## USING YOUR POCKET PHOTO ALBUM

### 4. Zoom In on your Pictures

Make sure your Pocket Photo Album is displaying a photograph. Push the Jog Dial in, towards the screen once; this will zoom in to the picture 2X. You will see “ZoomIn2X” on the screen. Push the Jog Dial in again as before; this will zoom into the picture 4X. You will see “ZoomIn4X” on the screen. Push the Jog Dial in a third time; this will zoom in 8X. You will see text indicating “ZoomIn8X” on the screen. Push in the Jog Dial in a fourth time; the original size will display.

Note: Depending on the original resolution of your picture, you may not be able to zoom in 8X. If the resolution is too low, the Pocket Photo Album may only allow you to zoom in up to 4X.

**Push the jog dial in towards the  
Pocket Photo Album  
to activate zoom mode.**



### **5. Panning Around your Pictures**

Push the Jog Dial in once to zoom in on a picture (as described previously). Then move the jog dial to the right or left. You will see 2 arrows appear, one pointing up and one pointing down. If you continue to hold the jog dial in one direction (right or left) the picture will begin to pan up or down. If you now want to pan your pictures to the right or left, press the round power/mode button once, and the arrows will change to right and left. If you then continue to hold the jog dial in one direction (right or left) the picture will begin to move right or left.

When you are finished panning around your picture, press the jog dial in, one press at a time, until you return to the full screen view.

Note: You can pan around your pictures in any zoom mode, 2X, 4X, and 8X.

### **6. Thumbnail View**

After the Pocket Photo Album is turned on, press and release the round Power/Mode button. Thumbnails of your images will be displayed on the screen. Move the Jog Dial to the left or right to highlight the thumbnail you want to see. Then press the Jog Dial in once, and you will be taken to a full screen of that image.

The Pocket Photo Album can display 9 thumbnails at a time. To move to the next 9 thumbnails in your Album, move the jog dial to the last image on the screen and then push the jog dial one more time to the right, and the screen will refresh with next 9 thumbnails.

### 7. Slide Show

After the Pocket Photo Album is turned on, press and release the round Power/Mode button twice, waiting 1 second in between presses. The screen will briefly display “slideshow” in the upper right hand corner. The images on your Pocket Photo Album will then begin to change approximately every 3 seconds. To stop the slide show, press and release the round power/mode button one time. To resume the slide show, press and release the round Power/Mode button twice, waiting 1 second in between presses.

### 8. Displaying your Photos to a Television

Connect the included TV out cable from your Pocket Photo Album to your television. (The yellow end of the cable connects to a video input port on your television). Once the cable has been tightly connected to your TV and Pocket Photo Album, turn on your television and select the correct corresponding video input on your television (See your television's user's manual).

Then turn on the Pocket Photo Album. You will notice that the screen on the Pocket Photo Album will remain dark. The television now acts as the Pocket Photo Album's screen.

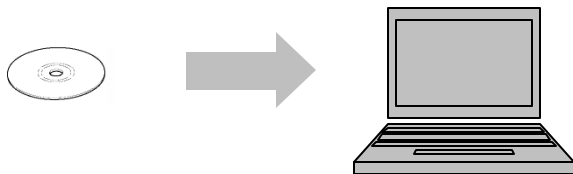
You can now use all functions mentioned above to display your photos, including zoom, pan, fast forward, and slide show.

When you disconnect the Photo Album from the television, the Pocket Photo Albums screen will automatically turn on.

## ■ DOWNLOADING PICTURES TO YOUR POCKET PHOTO ALBUM

### **Install the MAGPIX PhotoManager software on your computer**

The MAGPIX PhotoManager is MAGPIX's photo management software that allows you to quickly and easily transfer your digital images from your PC to your MAGPIX Pocket Photo Album. The MAGPIX PhotoManager is essential to getting the most out of your MAGPIX Pocket Photo Album.



Insert the installation CD that came with your Pocket Photo Album into your computer. After a few seconds, the CD should begin to AutoRun and automatically begin the installation of the PhotoManager.

If your CD does not Auto Run, you may have to go to “My Computer” and then double click on your CD drive. Then double click on the file “setup.exe” and the PhotoManager will begin to install.

Follow the on screen instructions to complete the installation. Once the installation is complete, **restart your computer**.

## DOWNLOADING PICTURES TO YOUR POCKET PHOTO ALBUM

### Start the PhotoManager software.

Double-click on the PhotoManager short cut icon on your desktop.



MAGPIX  
PhotoManager

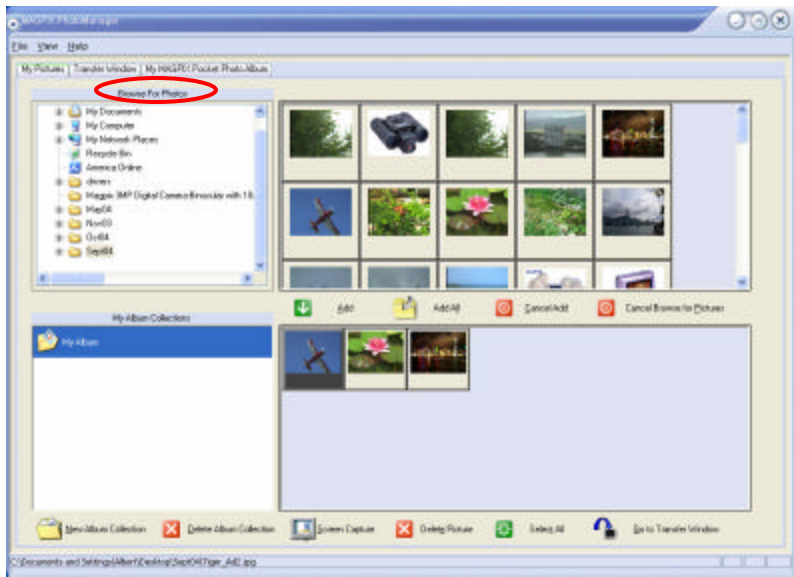
### The MAGPIX PhotoManager user interface has three main tabs or views:

- **My Pictures** - Browse for your digital images on your computer here and then create customized Photo Album Collections that can then be readied for transfer to the Pocket Photo Album.
- **Transfer Window** – Shows a final preview of the digital images that you intend to transfer to the Pocket Photo Album. This is also where you can arrange the order that the pictures will appear on your Pocket Photo Album.
- **My Pocket Photo Album** – Shows what's currently on your Pocket Photo Album when it is connected. This is where you can delete pictures off of your Pocket Photo Album.

# DOWNLOADING PICTURES TO YOUR POCKET PHOTO ALBUM

## 1. Using the My Pictures Tab:

The MAGPIX PhotoManager software opens with the **My Pictures** tab showing. You'll notice that there is a highlighted title called "Browse for Photos".



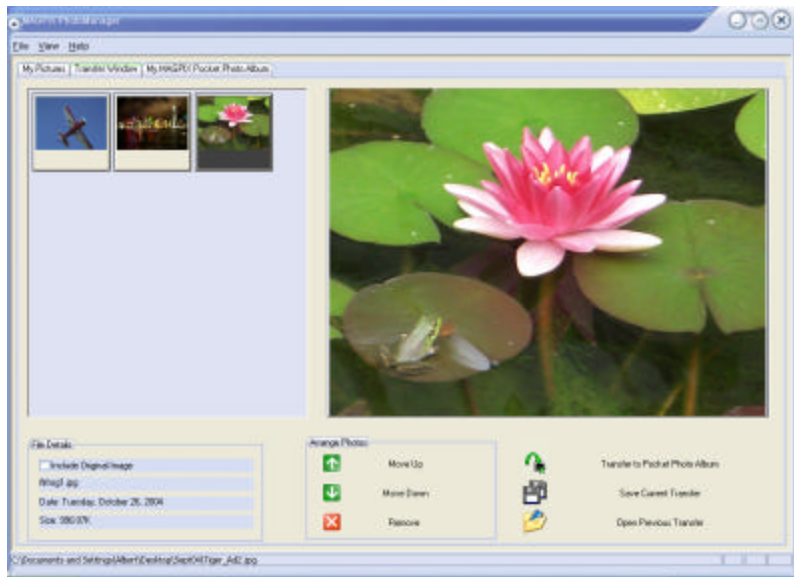
## DOWNLOADING PICTURES TO YOUR POCKET PHOTO ALBUM

- 1) Click on a folder that is likely to contain some images on your computer, such as My Documents. (Note: If a folder has a “plus” sign next to it, click on the “plus” sign and any folders located within that initial folder will appear. You can then click on these folders to see if you have any images in them).
- 2) You will then see thumbnails of all the images in the selected folder appear directly to the right.
- 3) Go to the “My Album Collections” section, (Just below the “Browse for Photos” section) and click on the folder “My Album” or create a new Album Collection.
- 4) Click on a thumbnail image from above and then click on the green “Add” button. This will create a copy of your original image from its original location on your computer, to the “My Album” collections folder. Repeat this step until you have selected all the photos you want to be placed into your Album Collection. You can also hold down the Ctrl key while clicking to select multiple photos at the same time.
- 5) Click on the green “Select All” button.
- 6) Click on the “Go to Transfer Window” button and you will be taken to the **Transfer Window** tab.

# DOWNLOADING PICTURES TO YOUR POCKET PHOTO ALBUM

## 2. Using the Transfer Window Tab:

The Transfer Window shows a final preview of the digital images that you intend to transfer to the Pocket Photo Album. This is also where you can arrange the order that the pictures will appear on your Pocket Photo Album. The Transfer Window is made up of 2 main areas: To the left, a thumbnail view of the pictures that are ready to be transferred to the MAGPIX Pocket Photo Album; And to the right, a larger view of the individual pictures.



### 3. Arranging Your Images:

The order you see the thumbnails in the Transfer Window is the order that your images will be transferred and viewed on your Pocket Photo Album. To change the order of the pictures:

- 1) Click on a thumbnail.
- 2) Then click on either the Move Up or Move Down buttons and you will see the image move up or down in order. **(Note: Sometimes you may only be able to move a thumbnail to the second to last position. To move the image into the last position, select the image that is currently in the last position and click on the Move Up button once.)**
- 3) To remove an image, click on the corresponding thumbnail and then click on the "Remove" button. The image will no longer be transferred to your Pocket Photo Album. While this image has been deleted from your transfer, the original image will remain on your computer in its original location and is not affected.

## DOWNLOADING PICTURES TO YOUR POCKET PHOTO ALBUM

### 4. Transferring Your Images to the Pocket Photo Album:

- 1) Unplug the rubber USB cover on the Pocket Photo Album and plug the small end of the USB cable to the Pocket Photo Album and the larger end to a USB port on your computer. If this is the first time you are using your Pocket Photo Album with your computer, you will want to wait 30 seconds before going on to the next step.
- 2) If a window appears asking what you would like to do with the “removable drive” that was just found, click on “take no action” and click OK.
- 3) Click on “Transfer to Pocket Photo Album” and you will be prompted to choose the location of your Pocket Photo Album. Choose the drive letter that corresponds to the Pocket Photo Album on your computer. For tips on identifying the correct drive letter, see the Advanced Features and Tips section below.
- 4) The photos will be transferred to your Pocket Photo Album. You will then be taken to the **My Pocket Photo Album** tab.

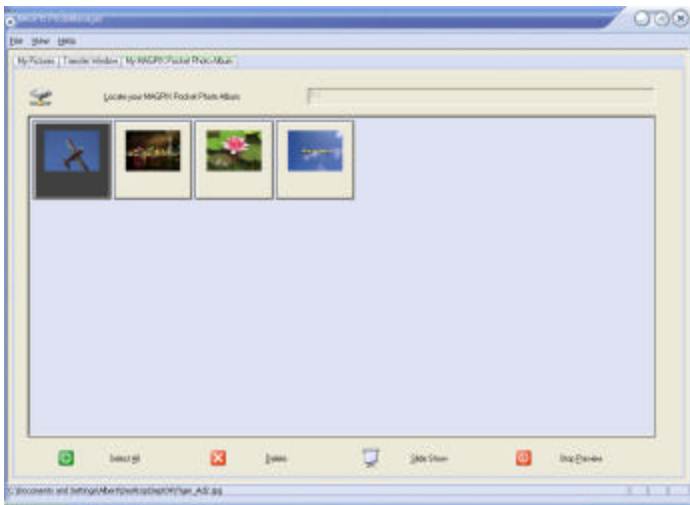
Note: If there is not enough memory on your Pocket Photo Album to transfer all the photos you have selected from your computer, the PhotoManager will download the photos in the order you have arranged them. You will then receive a message that there is not enough memory to proceed. To download the remaining photos to your Pocket Photo Album you may either add an SD memory card for additional memory, or delete some pictures already on your Pocket Photo Album. (Deleting your photos from your Pocket Photo Album is done in the “My Pocket Photo Album Tab”, described next). You can also try to change the target resolution size (See the Advanced Features and Tips section below). In general, using the default settings, you will be able to download and view approximately 70 photos using the Pocket Photo Album’s internal memory.

## DOWNLOADING PICTURES TO YOUR POCKET PHOTO ALBUM

### 5. Using the My Pocket Photo Album Tab:

When your Pocket Photo Album is connected, you will see thumbnails of the images that you are currently loaded on to your Pocket Photo Album. You may delete any images that you do not want on your Pocket Photo Album by highlighting the image and then clicking on the “Delete” button. **Disconnect the Pocket Photo Album from your computer and you are ready to go!**

Note: When an SD memory card (not included) is inserted in the Pocket Photo Album, it will only display images from that card. To view images on the Pocket Photo Album's internal memory, remove the SD card from the Pocket Photo Album.



### **Choosing the Correct Location of Your MAGPIX Pocket Photo Album –**

When you connect your Pocket Photo Album to your computer, your computer will recognize your MAGPIX Pocket Photo Album as a “removable disk”. It is not uncommon for computer users to have multiple removable disks, so choosing the correct location may become difficult. Here is an easy way to tell which drive letter represents your Pocket Photo Album:

If you do not have an SD card inserted in to the Pocket Photo Album follow these steps below:

- 1) Restart your computer. Connect the Pocket Photo Album to your computer. Then double click on the “My Computer” icon on your computer’s desktop or the “My Computer” menu item in your Start Menu, depending on your version of Windows.
- 2) The window that opens will show all Removable drives on your computer. Double click on each one until a removable drive opens with the folders “JPEG” and “Setting” in it. (There may be other folders and files as well). Remember which drive letter this is, and use this drive letter as the location of the Pocket Photo Album when you are prompted for it in the PhotoManager Program.

If you have an SD card inserted into the Pocket Photo Album, the removable drive name will be the same as the name of your SD card.

**Selecting more than one image at a time** – Sometimes you may want to select/highlight more than one image at a time to either add or remove from your Pocket Photo Album. To do this, either:

- 1) Hold down the shift key and then click on two images. All images in-between these two images will be selected OR
- 2) Hold down the ctrl key and click on individual images. As long as you hold down the ctrl key while you click, you can multiply select any images that you want.

**Downloading Images to be Viewed on the Television** – We recommend using the 1024x768 or lower target resolution setting if you plan on viewing you images on a television using the TV out feature of the Pocket Photo Album. This will give you the best image quality on your television. Images viewed on high definition televisions or televisions with enhanced imaging may appear pixilated. Using the lowest target resolution setting will help to decrease the pixilation.

**Fitting as Many Pictures on the Pocket Photo Album as Possible** – Setting the target resolution to 640x480 in the Advanced Options Menu will allow you to fit the most pictures into your Pocket Photo Album.

**LED Indicator** – The LED will remain blue, when the Pocket Photo Album is turned on and in use. When the Pocket Photo Album is connected to the computer, the LED will turn green. A blue flashing LED means that the batteries are running low on the Pocket Photo Album.

**Using the Screen Capture Feature** – In the My Pictures Tab, there is a Screen Capture button. When this button is depressed, the PhotoManager software will capture an image of everything currently displayed on your computer's screen, except for the PhotoManager software window. For example, if you only have the PhotoManger application running on your computer, and you click on the Screen Capture button, you will get a picture of your computer's entire desktop. If you have a web page open, and you click on the Screen Capture button, you would capture an image of that web page. (Note: You are only capturing an image of what is visible on that web page. Any area on the web page that you need to scroll to, will not be captured).

A particularly useful feature is capturing a slide presentation so that you can display the slides on a television, using the TV out function of the Pocket Photo Album. Here is a special technique that allows you to capture slides without any borders.

- 1) Launch the MAGPIX PhotoManager software
- 2) Launch your presentation software
- 3) Set your presentation software to show the full screen slides (SlideShow)... All windows menu bars should disappear depending on your particular application.
- 4) Display your first slide.
- 5) Hold down the alt key and press tab until you select the PhotoManager application icon.
- 6) The PhotoManager Software will display. Click on the screen capture button and you will capture an image of your first slide.
- 7) To capture the next slide, go back to your presentation software, advance to your next slide and repeat step 5 through seven until you have captured all of your slides.

- 8) Close your presentation program and you are ready to transfer the slides to your Pocket Photo Album – In the Transfer Window you can make sure that your slides are in the correct order.
- 9) Depending on your particular computer, you may need to set your computer's Task Bar to "auto hide" if you are capturing the task bar on your slides. (Please see the Windows help guide on your computer for details).

### **Sending an Image in Its Original Format to Your Pocket Photo Album –**

In some special cases you may want to send an image in its original format and size to your Pocket Photo Album. **However, doing so will greatly decrease the number of pictures your Pocket Photo Album can hold.**

To do this, add the image as you normally would and proceed to the Transfer Window. Select the thumbnail of the image in the Transfer Window. You will notice that there is a check box named "Include Original Image". Check that box and the original image will be transferred to your Pocket Photo Album and placed in to a special folder called "Original.IMG".

This feature is useful if you want to store the original image on your Pocket Photo Album until a later time when you can connect Pocket Photo Album to a computer without starting the PhotoManager Program, but rather going to "My Computer" and Opening the Pocket Photo Album as a removable hard drive. When you double click on the folder "Original.IMG" you will find your original image there and you can copy it to any computer.

**Using an SD Card with Your Pocket Photo Album**— Make sure that the Pocket Photo Album is turned off. Make sure that the SD card's write protect switch is set to "unprotect" or "unlocked". Insert the SD card in to the Pocket Photo Album in the same orientation as shown on the icon on the back of the Pocket Photo Album. Do not force the SD into the Pocket Photo Album. To remove the SD card, push the SD in towards the device, and the SD card will eject.

When an SD memory card (not included) is inserted in the Pocket Photo Album, it will only display images from that card. To view images on the Pocket Photo Album's internal memory, remove the SD card from the Pocket Photo Album.

**I'm using an SD card, and I have plenty of available memory, but I always get an error message or a message that says I can't write to it** – Make sure that the write protect switch (located on the side of the SD card) is set to "unprotect" or "unlocked". If it is set to protect, the Pocket Photo Album will not be able to write to it.

**Resetting the Pocket Photo Album** – In the unlikely event that you need to reset the Pocket Photo Album, first make sure that there is no SD card inserted into the Pocket Photo Album. Remove the batteries from the Pocket Photo Album and let the Pocket Photo Album sit for 2 minutes. Place new batteries into the Pocket Photo Album. With screen of the Pocket Photo Album facing towards you, move and hold the jog dial to the right. Without releasing the jog dial, press the power/mode button once. Do not release the jog dial until you see the blue LED start to flash (about 10 seconds). Release the jog dial and in a few seconds, “no photo loaded” will appear on your device. The Pocket Photo Album has now been reset. **NOTE: All images on the Pocket Photo Album will be erased.**

Below you will find detailed descriptions on the function and operation of each of the buttons and menu items in the MAGPIX PhotoManager software.

- **File Menu**

- **Advanced Options**

- **Setting the Target Image Size** – Choose the resolution you would like to use to download your images onto your Pocket Photo Album. For best performance, we strongly recommend that you keep the resolution setting on 1024x768. The larger the resolution setting, the fewer pictures you can keep on your Pocket Photo Album. Also, using the highest resolution setting will slow down the performance of your Pocket Photo Album.
    - **Setting the Slide Show Timer** – This allows you to set the timing of the slide show on your computer. Note, that this setting only affects the timing of the slide show on your computer. The built-in slide show feature on the Pocket Photo Album is set to a predetermined interval.

- **Clear Transfer Preview** - This removes all photos in the Transfer Window tab waiting to be transferred to the Pocket Photo Album.
  - **Exit** - Selecting this option ends the MAGPIX PhotoManager program.

- **View Menu**
  - **Status Bar** - Selecting this option once will hide the Status Bar located at the bottom left corner of the PhotoManager program. The Status Bar provides additional helpful information, such as file names of your images, when you pass your pointer over a thumbnail. Selecting this option a second time will turn the Status Bar back on.
  - **Size Image to Window** - Selecting this option will resize your selected image to fit into the preview window. If this option is not selected, your selected image will be shown at its full size and you may be required to scroll to see entire picture.
- **Help Menu**
  - **About MAGPIX PhotoManager** - Selecting this option will display the About MAGPIX box and associated information.
  - **Help** – Displays this help file.

### My Pictures Tab Buttons

- **Add** – Adds selected photo from your computer to the selected album collection.
- **Add All** – Adds all photos from the selected folder from your computer to the selected album collection.
- **Cancel Add** – Stops in progress adding of photos to your selected album collection.
- **Cancel Browse for Pictures** – Stops in progress loading of the photos you are browsing.
- **New Album Collection** – Creates a new Album Collection where you can add and store pictures for transfer to your MAGPIX Pocket Photo Album.
- **Delete Album Collection** – Deletes selected Album Collection.
- **Screen Capture** – Captures an image of everything currently displayed on your computer's screen, except the PhotoManager software window. For more information, see the Tips and Advanced Features section in this Help Guide.
- **Delete Picture** – Deletes selected image in an Album Collection.
- **Select All** – Selects all images in an Album Collection.
- **Go to Transfer Window** – Takes selected photos to the Transfer Window, for transfer to the MAGPIX Pocket Photo Album.

## Transfer Window Tab Buttons

- **Include Original Image** – Copies your original image in its original format to your MAGPIX Pocket Photo Album along with a MAGPIX Pocket Photo Album optimized version. The original image can be found in a folder on the Pocket Photo Album called “Original.IMG”. You can only see this folder if you use your MAGPIX Pocket Photo Album as a removable drive. For more information, please see the Tips and Advanced Features Section in this Help Guide.
- **Move Up** – Allows you to arrange your images in the order you would like to view them on your MAGPIX Pocket Photo Album. Moves a thumbnail image up in order.
- **Move Down** – Allows you to arrange your images in the order you would like to view them on your MAGPIX Pocket Photo Album. Moves a thumbnail image down in order. (Note: Sometimes you may only be able to move a thumbnail to the second to last position. To move the image into the last position, select the image that is currently in the last position and click on the Move Up button once.)
- **Remove** – Removes a photo from the Transfer Window. This photo will no longer be downloaded to the MAGPIX Pocket Photo Album.
- **Transfer to Pocket Photo Album** – Sends the photos in the Transfer Window to your MAGPIX Pocket Photo Album.
- **Save Current Transfer** – Saves the photos in the current Transfer Window for transfer at a later time. This is useful when you want to be able to quickly download sets of images to your Pocket Photo Album that you have already arranged and organized once. Saving the Current Transfer is like creating a play list for MP3 player. Once the play list is created, all you have to do is select it and you can immediately download it to your device.
- **Open a Previous Transfer** – Opens a previously saved transfer.

## My MAGPIX Pocket Photo Album Tab Buttons

- **Locate Your MAGPIX Pocket Photo Album** – Allows you to choose where your MAGPIX Pocket Photo Album is located on your computer. For example, depending on the number of USB devices and removable drives that is on your computer, you may have to tell your computer, which drive letter represents your Pocket Photo Album.
- **Select All** – Selects/ highlights all photos on your MAGPIX Pocket Photo Album.
- **Delete** – Deletes selected photos from your MAGPIX Pocket Photo Album. This does not delete your original photos from your computer.
- **Slide Show** – Starts a slide show of the images that are on your MAGPIX Pocket Photo Album on your computer's display.
- **Stop Preview** – Stops preview of items currently on your MAGPIX Pocket Photo Album

## TECHNICAL SPECIFICATIONS

### Specifications

#### Specifications:

Screen Size	1.5" TFT LCD Screen
Internal Memory	16 MB Built-in Flash Memory
Removable Memory	SD/MMC Memory Card Slot
Image Storage	Approx. 70 images using MAGPIX PhotoManager Software at default setting and internal memory. Approx. 150-200 images using MAGPIX PhotoManager Software at max compression setting and internal memory.  Unlimited through use of SD memory cards
Power	2 AAA Batteries (not included)
Interface	USB Port
TV Out Port	Yes
Image Format	JPEG
Size and Weight: (with batteries)	2.4"x 2.0"x 0.7" 2.2 oz.

## **TECHNICAL SPECIFICATIONS**

### **System Requirements**

#### **Included in This Box**

#### **Minimum System Requirements:**

- PC running Windows 98/2000/ME/XP (2000/XP may require admin rights to install)
- Pentium III CPU or higher
- 128MB RAM (256MB recommended)
- One available USB port
- 250MB available hard disk space
- CD-ROM drive for software installation

#### **Included in the Package:**

- MAGPIX Pocket Photo Album
- MAGPIX PhotoManager Software CD
- Carry Case
- Wrist Strap
- USB Cable
- TV Out Cable
- User's Manual

## TROUBLESHOOTING AND FREQUENTLY ASKED QUESTIONS

**Q.** Do I need to install any software on my computer for the Pocket Photo Album to work?

**A.** Yes. The MAGPIX PhotoManager is MAGPIX's photo management software that allows you to quickly and easily transfer your digital images from your PC to your MAGPIX Pocket Photo Album. The MAGPIX PhotoManager is essential to getting the most out of your MAGPIX Pocket Photo Album.

**Q.** I downloaded new pictures to the Pocket Photo Album from my computer, but the Pocket Photo Album still shows the same pictures that I had before, plus the new photos I just downloaded – why haven't the older photos been deleted?

**A.** The Pocket Photo Album does not automatically delete your pictures off of itself even after you have downloaded more pictures from your computer. Delete your old pictures by following the instructions in the "Downloading pictures to your Pocket Photo Album" section in this manual.

**Q.** The pictures I downloaded have some purple artifacts or seem to be distorted or have some black spots and lines on them.

**A.** Try reconnecting the USB cable to the computer and to the Pocket Photo Album. Make sure the USB cable is securely inserted into both your computer and the Pocket Photo Album.

## TROUBLESHOOTING AND FREQUENTLY ASKED QUESTIONS

**Q.** My batteries are low, but I can't get to a computer to use the Pocket Photo Manager software. I don't want to lose my pictures from my Pocket Photo Album.

**A.** The Pocket Photo Album is not dependent on its batteries to keep its pictures in memory. You won't lose your pictures if your batteries run out. Just replace the batteries and your pictures will still be where you left them.

**Q.** None of the buttons seem to work. The LCD display seems to be stuck. For instance, the Pocket Photo Album will not turn on or change modes. How do I reset the Pocket Photo Album?

**A.** A system error has occurred. In the unlikely event that you need to reset the Pocket Photo Album, first make sure that there is no SD card inserted into the Pocket Photo Album. Remove the batteries from the Pocket Photo Album and let the Pocket Photo Album sit for 2 minutes. Place new batteries into the Pocket Photo Album. With screen of the Pocket Photo Album facing towards you, move and hold the jog dial to the right. Without releasing the jog dial, press the power/mode button once. Do not release the jog dial until you see the blue LED start to flash (about 10 seconds). Release the jog dial and in a few seconds, "no photo loaded" will appear on your device. The Pocket Photo Album has now been reset. **NOTE: All images on the Pocket Photo Album will be erased.**

**Q.** I inserted the installation CD, but no menu appears automatically.

**A.** Go to "My Computer" and right click on your CD drive. Then select "AutoPlay" or "AutoRun". The menu should now appear.

## TROUBLESHOOTING AND FREQUENTLY ASKED QUESTIONS

**Q.** The Pocket Photo Album will not turn on.

**A.** Make sure that you inserted the batteries in correct orientation. There are markings showing which way the batteries go inside the batter chamber. Also, make sure that you only use brand new batteries.

**Q.** When I insert my SD card, the LCD displays an error.

**A1.** Make sure that the Pocket Photo Album is turned off, before inserting the SD card.

**A2.** Make sure that the write protect switch on the SD card itself is not engaged. If it is, the Pocket Photo Album will not be able to record pictured on it and will give you an error.

**A3.** You may need to format your SD card on your computer before you can use it with the Pocket Photo Album. Please see the Windows help for more information.

**Q.** I'm playing back my pictures on the TV - Why do some images appear to take longer to advance?

**A.** The Pocket Photo Album is actually converting the picture it has in its memory to a format that can be understood by the TV.

## ■ TROUBLESHOOTING AND FREQUENTLY ASKED QUESTIONS

**Q.** Do I need a serial number to install the PhotoManager Software?

**A.** You do not need a serial number to install the MAGPIX Photo Manager software.

**Q.** I've lost my TV out cable or the Battery Cover. Where can I get replacement parts.

**A.** Please visit our website at [www.magpix.com](http://www.magpix.com) to order replacements for lost parts.

**Q.** Where can I find our more about MAGPIX and MAGPIX products and accessories?

**A.** Please visit our website at [www.magpix.com](http://www.magpix.com)